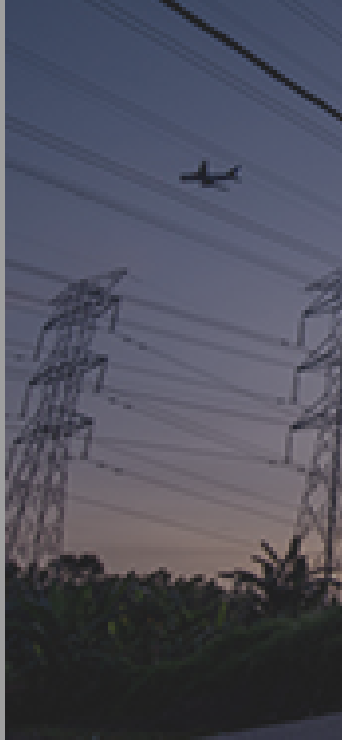


## Sustainability at Shell



### Our climate target

#### Tools



Interactive chart tool



Download centre

#### Our core values

Business ethics and transparency

Ethical leadership

Anti-bribery and corruption

Personal data

Collaborations and stakeholder engagement

Political engagement

Tax transparency

Safety

Our approach to safety

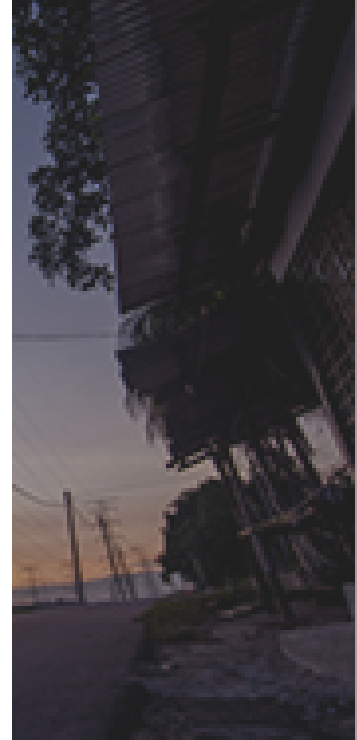
Process safety

Raising safety standards

Preparing for emergencies

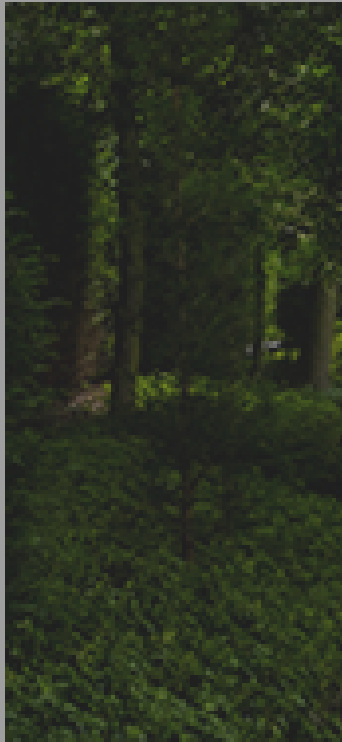
Spill response and prevention

Transport safety

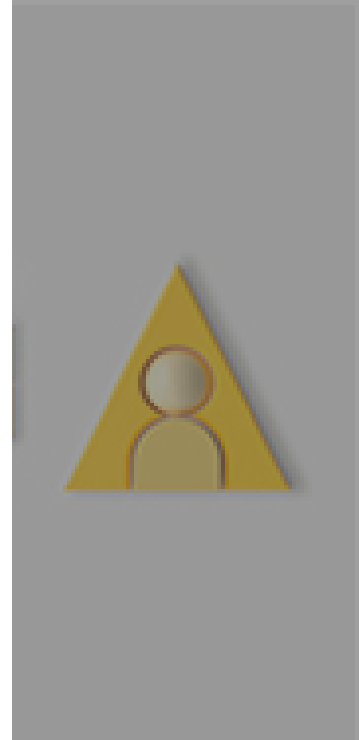


## Product stewardship

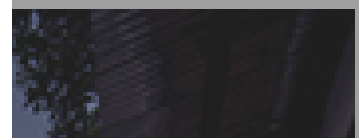
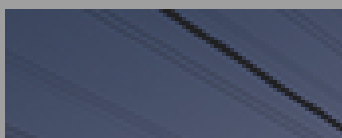
### Top Topics



### Letter from the CEO



### Sustainability at Shell





## Our climate target

### Tools



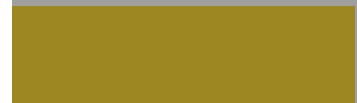
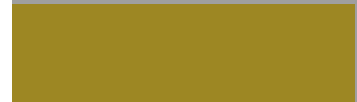
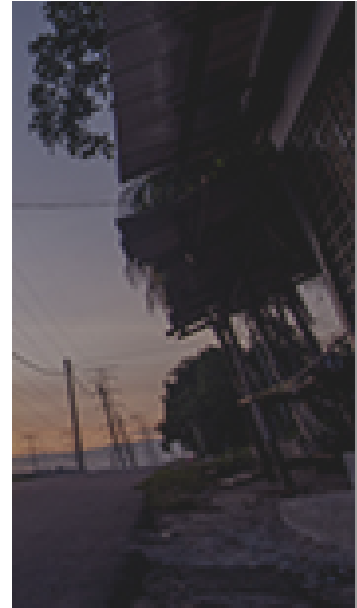
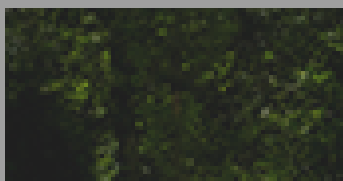
[Interactive chart tool](#)

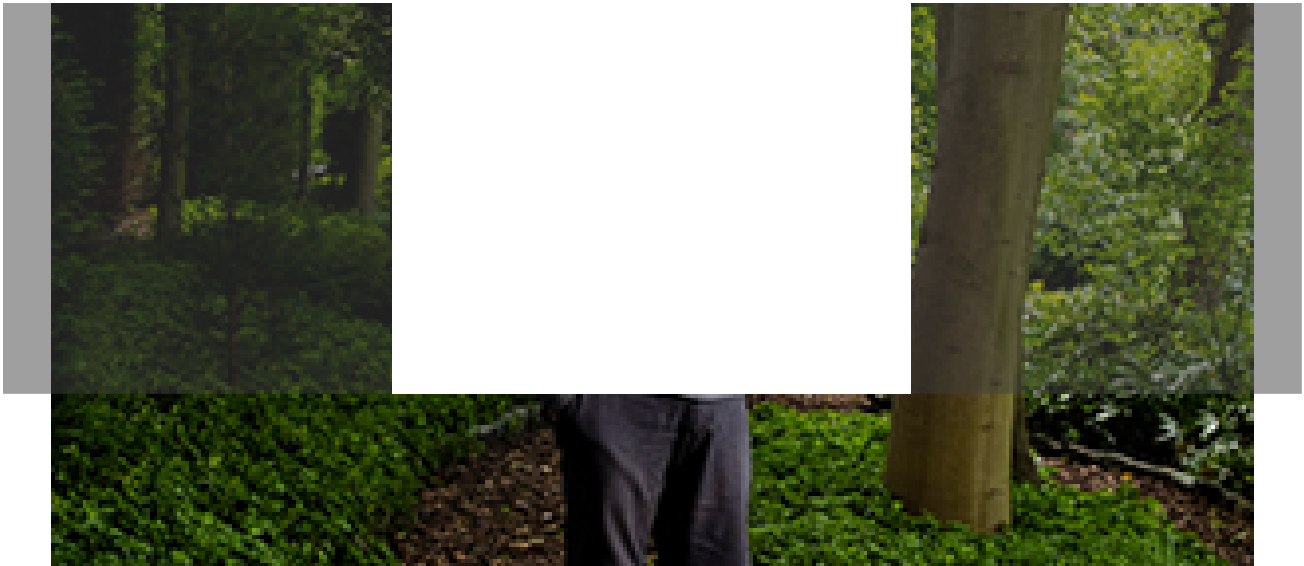


[Download centre](#)

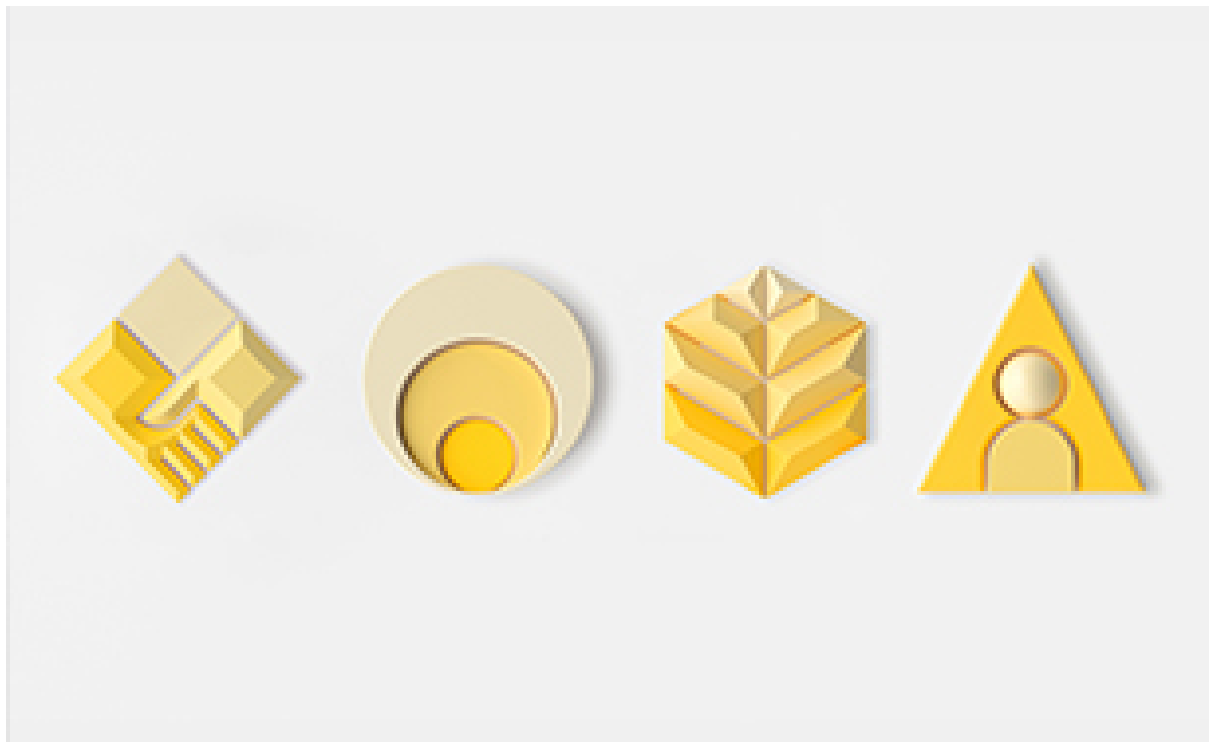
- [Achieving net-zero emissions](#)
- [Our climate target](#)
- [Our approach](#)
- [Our carbon intensity](#)
- [Sectoral decarbonisation](#)
- [Managing greenhouse gas emissions](#)
- [Our approach](#)
- [Energy efficiency in our operations](#)
- [Methane emissions](#)
- [Flaring](#)
- [Realising the role of nature](#)
- [Capturing carbon emissions](#)
- [Producing natural gas responsibly](#)
- [Natural gas](#)
- [Working for the future of Groningen](#)
- [Shales](#)
- [Providing lower-carbon electricity](#)
- [Fuelling mobility](#)
- [Driving innovation](#)

### Top Topics





**Letter from the CEO**



**Sustainability at Shell**

