



Sustainability performance data

 Average read time: 1 minute



We have consolidated our sustainability performance and people data to help with further analysis.

We collect and report on a large number of sustainability metrics. This page provides a range of environmental and social data in accessible formats for those wanting to delve deeper into specific areas of our performance.



Planet

Data on our environmental impacts including waste and plastic packaging, greenhouse gas emissions and energy use, water use and sustainable sourcing.

-  [Climate action \(XLSX 69KB\)](#)
-  [Waste-free world \(XLSX 55KB\)](#)

- [Water \(XLSX 51KB\)](#)
- [Environmental fines and prosecutions \(XLSX 51KB\)](#)



Society

Data on occupational health & safety, key nutrition targets (global and by country) and community investment.

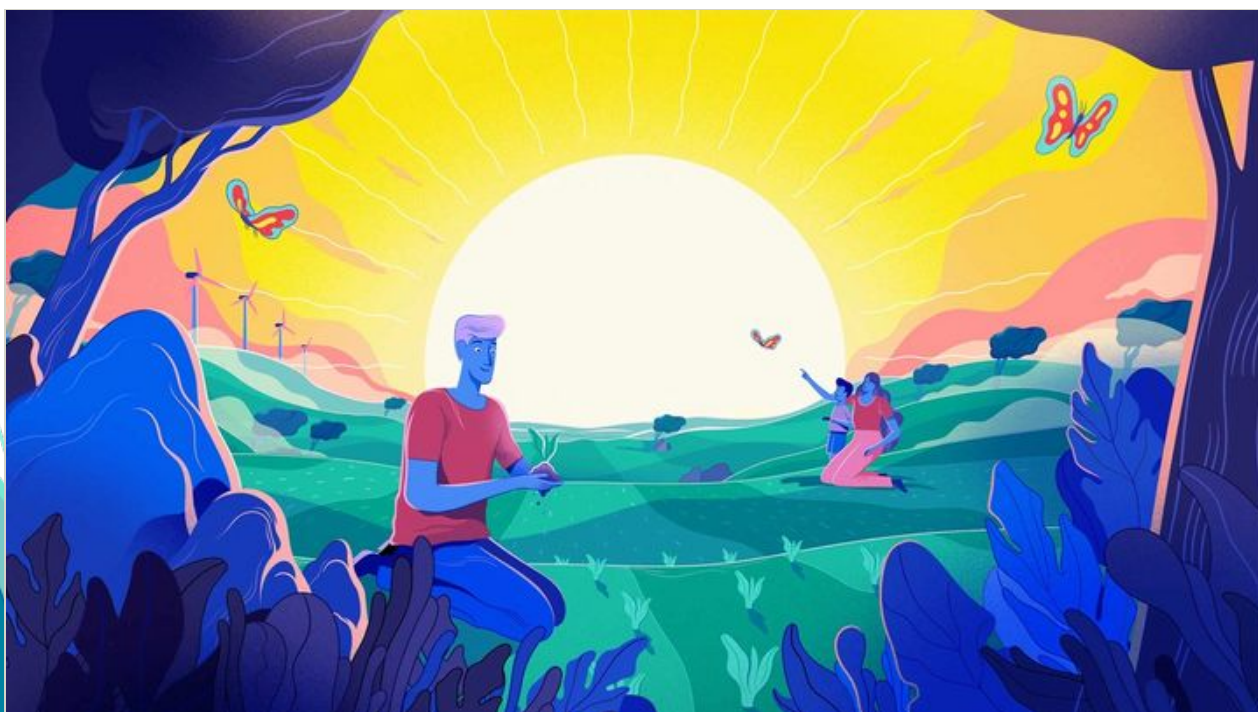
- [Safety at work \(XLSX 53KB\)](#)
- [Nutrition targets \(XLSX 51KB\)](#)
- [Community investment \(XLSX 54KB\)](#)



People

Data on our workforce including workforce composition, gender diversity, learning and development and recruitment and retention.

- [People performance data \(XLSX 44KB\)](#)



[Unilever Sustainable Living Plan 2010 to 2020](#)

The USLP was game-changing for our business. We're proud of our progress but know that there is much more to do.

PDF 8.02MB



Independent Assurance and Basis of Preparation

▼ [Unilever's Basis of Preparation 2020 \(PDF 3.31MB\)](#) contains a full description of all Unilever Sustainable Living Plan and Environmental and Occupational Safety performance measures subject to external assurance in the reporting period – including the definitions, scope and data preparation and assumptions. See also ▼ [PwC's Independent Limited Assurance Report 2020 \(PDF 211KB\)](#).



Share this
page



Connect with us

We're always looking to connect with those who share an interest in a sustainable future.



Contact us

Get in touch with Unilever PLC and specialist teams in our headquarters, or find contacts around the world.

Contact us

This is Unilever's global company website

© Unilever 2022

[What's in our products?](#)

[Contact](#)

[Legal notice](#)

[UK Modern Slavery Act Transparency Statement](#)

[Accessibility](#)

[Vulnerability Disclosure Policy](#)

[Cookie Notice](#)

[Privacy Notice](#)

[Sitemap](#)

[Search Jobs](#)

[Cookie Settings](#)